

NOVEMBER 2024

news

9TH ISSUE | REAL ESATE

Dear Valued Partners!

Greetings and Welcome to Our November Edition!

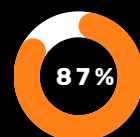
November marks the start of one of the most joyful and meaningful times of the year. It's a season for gratitude, giving back to the community, and preparing for the opportunities and challenges that come with the holidays. For businesses, it's a unique time to reflect on successes, show appreciation to employees and customers, and end the year on a high note.

At Hexagon Corporate Center, we're here to support your journey through this bustling season. Whether it's creating a welcoming holiday atmosphere, engaging in community events, or simply ensuring your workplace runs smoothly, our goal is to help your business thrive.

This month, we're excited to share important updates, practical tips for embracing the holiday spirit at work, and opportunities to connect with the community. Let's make this season memorable, meaningful, and successful together!



OCCUPANCY STATUS



HEXAGON
CORPORATE
CENTER



SGS FOUNDATION
BUILDING



SGS ILO-ILO
WAREHOUSE



SGS CEBU
WAREHOUSE

ESTABLISHED IN 2004

PH: +63 917-709-3415

WWW.SDC.PH

news

9TH ISSUE | SEASON GREETINGS

Spreading Holiday Cheer: Tips for Your Workplace

The holiday season is a unique opportunity to create an environment that inspires joy, connection, and positivity in the workplace. Whether you're fostering team camaraderie or engaging with customers, these ideas can help bring the festive spirit into your space:

1 FESTIVE DECOR



Transforming your workplace into a winter wonderland doesn't have to be expensive or complicated. Thoughtful decorations can create a welcoming and cheerful environment for both employees and visitors.

2 TEAM ACTIVITIES



The holiday season is a great time to foster connection and boost morale through activities like Secret Santa, festive potlucks, trivia contests, DIY crafts, or themed dress days, creating a warm and joyful workplace atmosphere.

3 GIVING BACK

The holidays are a perfect time to embrace the spirit of giving through charity drives, team volunteering, adopting families in need, donation matching, or simple acts of kindness like sharing holiday cards or small gestures of support, fostering community impact and workplace morale.



NOVEMBER 2024

news

9TH ISSUE | SEASON GREETINGS

Why It Matters

Celebrating the holidays in the workplace is about more than just decorations and parties.
It's a chance to:

**STRONGER
TOGETHER**

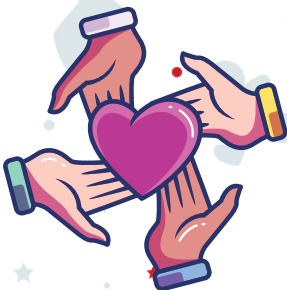
Build Camaraderie

Make Positive Impressions



Increase Employee Morale

Give back to the Community



JOIN US ON THIS CAUSE!
and let's all celebrate this season with smile and cheers.

ESTABLISHED IN 2004
PH: +63 917-709-3415

EMAIL US AT SDCSALES.INFO@SDC.PH
WWW.SDC.PH

news

9TH ISSUE | PROPERTY HIGHLIGHT

AVAILABLE SPACES TODAY AT HEXAGON CORPORATE CENTER!



PREMIUM COMMERCIAL AND OFFICE SPACES TO EXPLORE!

Situated on the ground floor of the Hexagon Corporate Center, this unit offers prime visibility for your business, attracting the bustling market along Quezon Avenue. Moreover, this unit comes fully equipped with existing enhancements, ensuring a seamless transition for expanding your operations within our building or relocating entirely.

Whether you're a growing startup in need of a dynamic, ready-to-use space or an established company seeking a prime location to enhance your presence, this unit offers the ideal balance of convenience, style, and functionality. For those preferring to design and customize their own space, we also offer bare-shell units that allow for complete flexibility in tailoring the layout to meet your specific business needs.

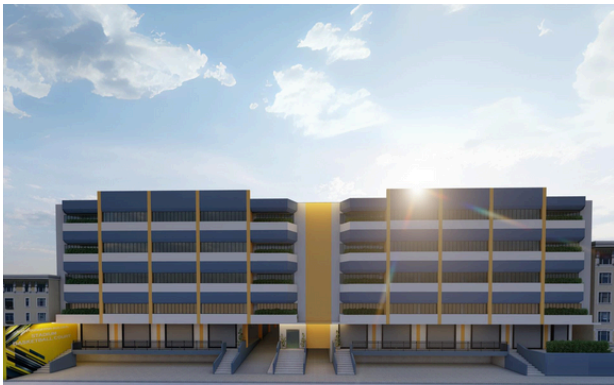
Floor / Unit	Leasable Space (in sqm)	Status of Deliverables
GF & MF Unit 01	159.29	Bare-shell
GF & MF Unit 05	344.95	Fitted
7F Unit 06	394.28	Bare-shell
8F Unit 03	246.05	Bare-shell
9F Unit 01	618.96	Bare-shell

news

9TH ISSUE | LISTINGS

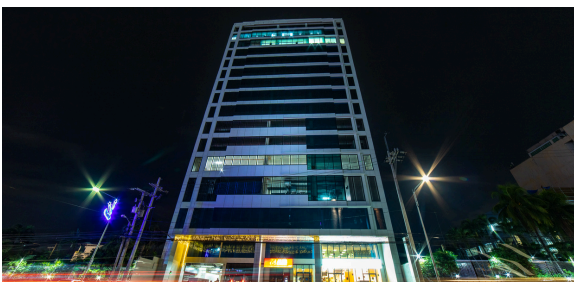
The Horizon Offices, located on the bustling G. Araneta Avenue, is currently undergoing an exciting transformation that will elevate its appeal and functionality. This prime location offers unparalleled visibility and effortless access to major transportation hubs, making it an ideal choice for companies looking to expand or establish a new office presence.

>>> G. ARANETA AVE. QUEZON CITY



>>> MUELLE LONEY ST. ILO-ILO CITY

The SGS Ilo-Ilo Warehouse features a design optimized for tenant functionality. Its strategic location provides convenient access to major transportation routes, facilitating smooth local and international shipments. The spacious interior offers abundant storage space and effective inventory management. Whether for short-term storage or long-term logistics requirements, the facility is well-prepared to cater to various businesses in the area.



>>> QUEZON AVENUE, QUEZON CITY

Hexagon Corporate Center, situated in the bustling hub of Quezon City, offers prime visibility for businesses. Whether seeking to expand or establish a new venture, companies can relish the convenience and prestige of a strategic location on one of the busiest thoroughfares in the Metro.