

MARCH 2024

NEWS

ISSUE ONE | REAL ESTATE

Dear Valued Partners!

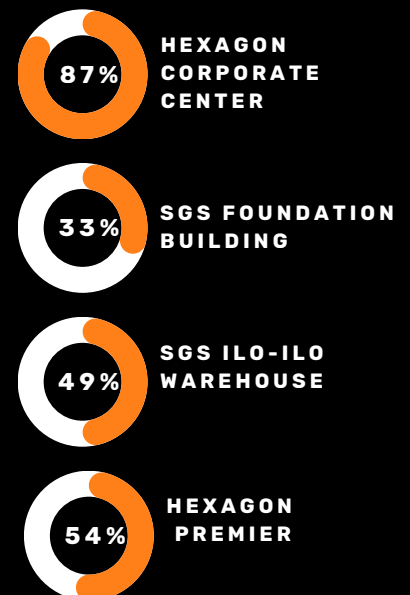
Sunproperties Development Corp. (SDC) highlights The Hexagon Corporate Center's impressive 87.03% occupancy rate, boosting the overall average of 72.25% leased properties as of March 2024.

Whether you are in search of commercial buildings, warehouses, or residential house and lots for sale, SDC offers a diverse range of listings tailored to meet your unique real estate needs. Our properties are designed for functionality and strategically positioned to provide the ideal balance of convenience and investment possibilities.

We invite you to explore our exceptional listings and discover the opportunities that await you. Contact us today to learn more about our available properties and how SDC can assist you in finding the perfect real estate solution for your business or personal endeavors.



OCCUPANCY STATUS



ESTABLISHED IN 2004

PH: +63 917-709-3415

WWW.SDC.PH

news

ISSUE ONE | REAL ESTATE



KARUHATAN, VALENZUELA

➤➤➤ ₱78,000/mo

Hexagon Premier is a contemporary business building with expanded commercial space and retail facilities combined with a primary selling point in its location right across SM Valenzuela City.

SGS Foundation Building in Quezon City is strategically located on G. Araneta Avenue, offering convenient access to most transportation hub, making it a prime location for logistic and shipping companies.

starts at
➤➤➤ ₱21,000/mo

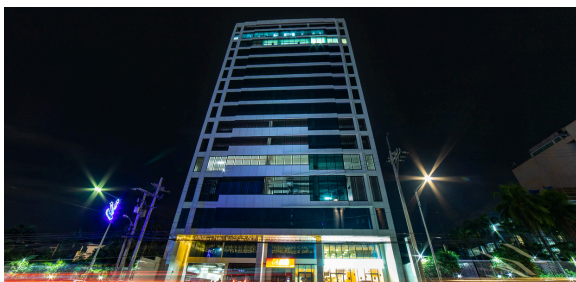
G. ARANETA AVE. QUEZON CITY



MUELLE LONEY ST. ILO-ILO CITY

➤➤➤ ₱190,000/mo

The SGS Ilo-Ilo Warehouse is situated on Muelle Loney St., just a short distance from the vibrant city center of Ilo-Ilo. With ports and other vital facilities located a few miles away, it is an ideal location for logistics and storage services.



➤➤➤ **QUEZON AVENUE, QUEZON CITY**
starts at
₱127,000/mo

Hexagon Corporate Center, situated in the bustling hub of Quezon City, offers prime visibility for businesses. Whether seeking to expand or establish a new venture, companies can relish the convenience and prestige of a strategic location on one of the busiest thoroughfares in the Metro.